

Microsoft Flight Simulator 2020

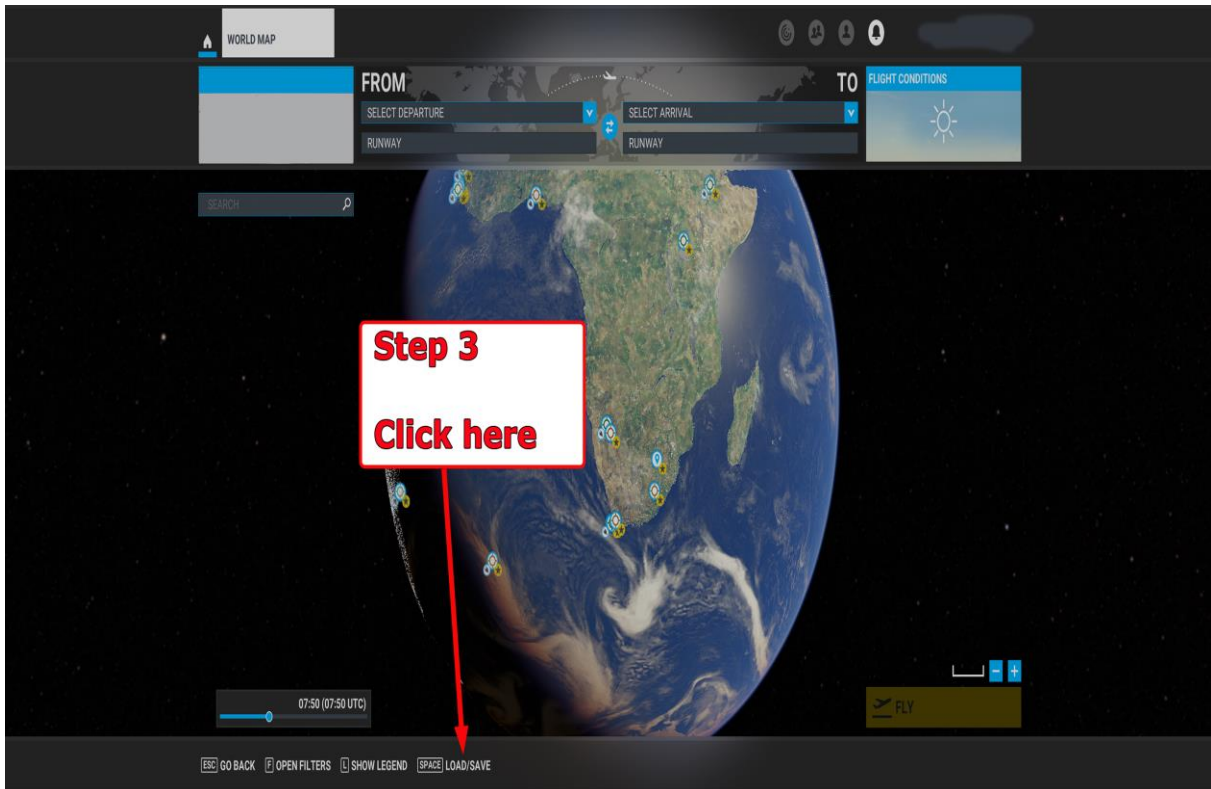
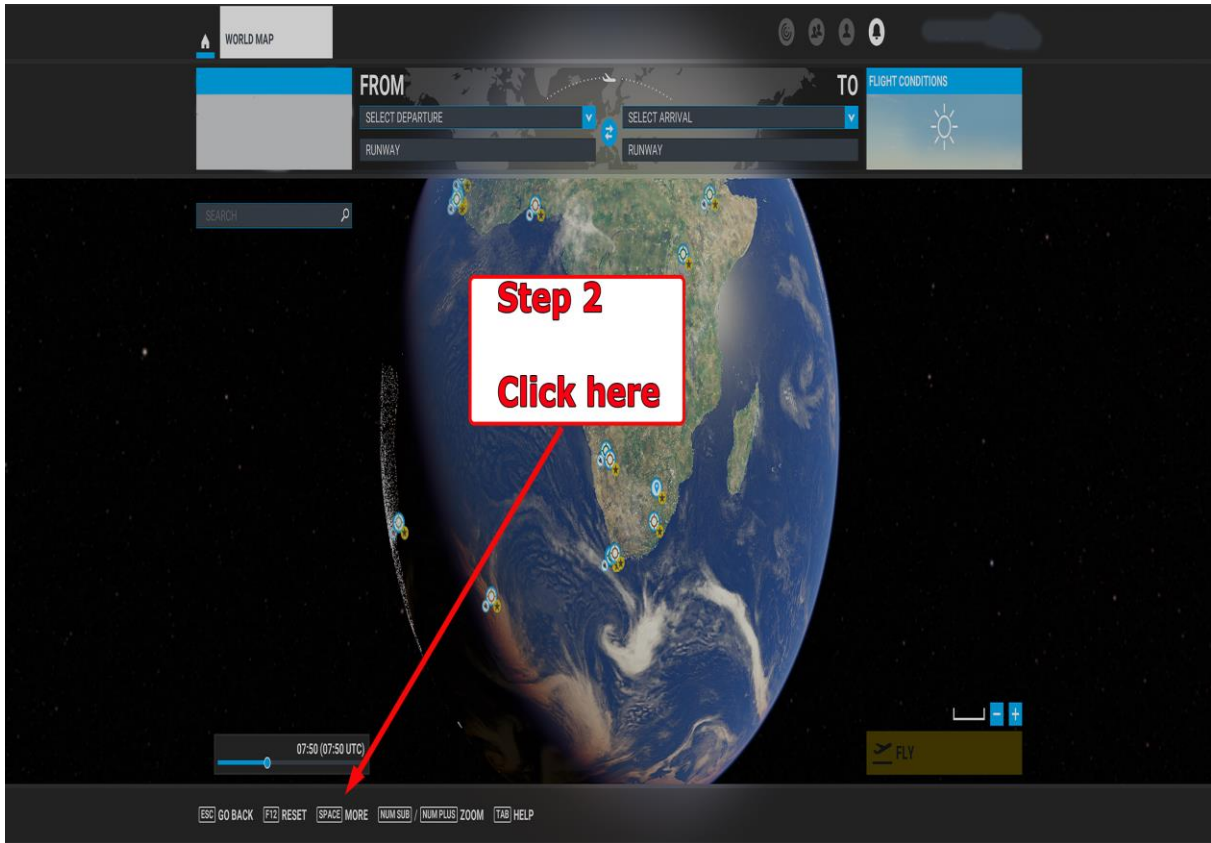
Garmin 530 NAV Management system.
Importing and Activation of a Flightplan

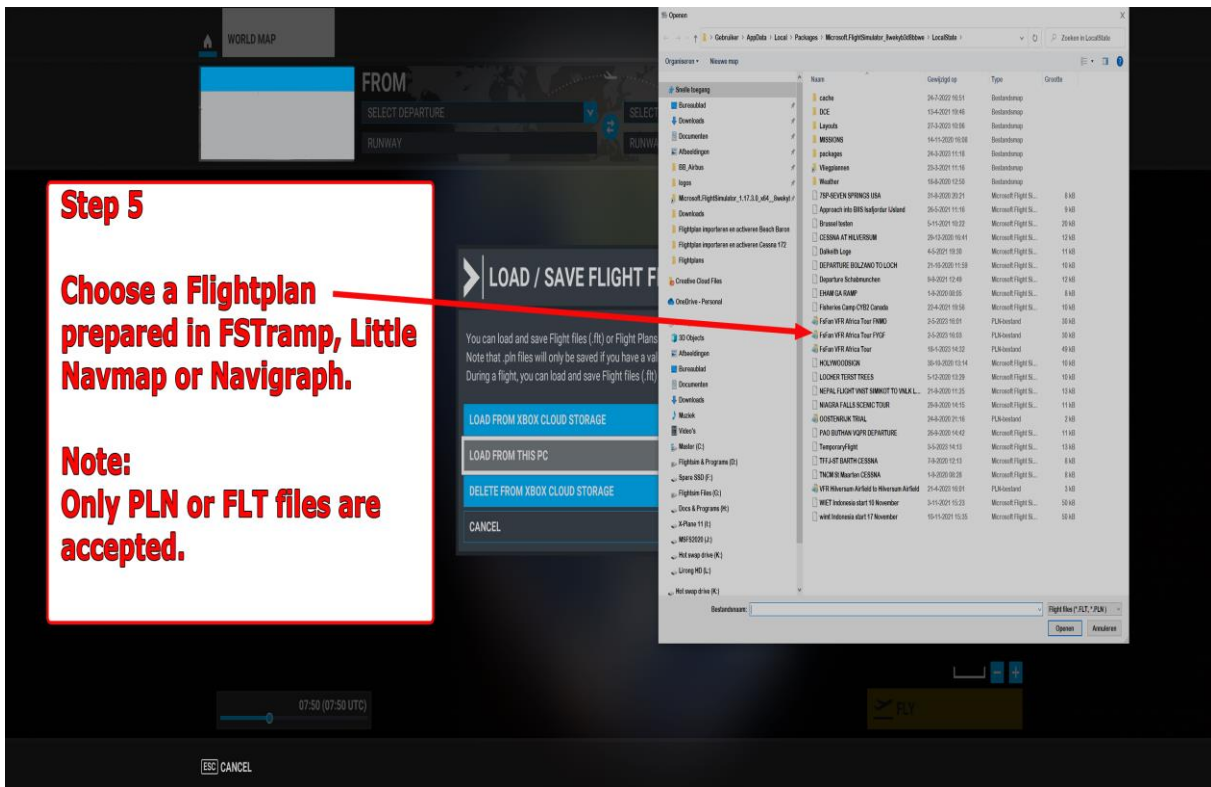
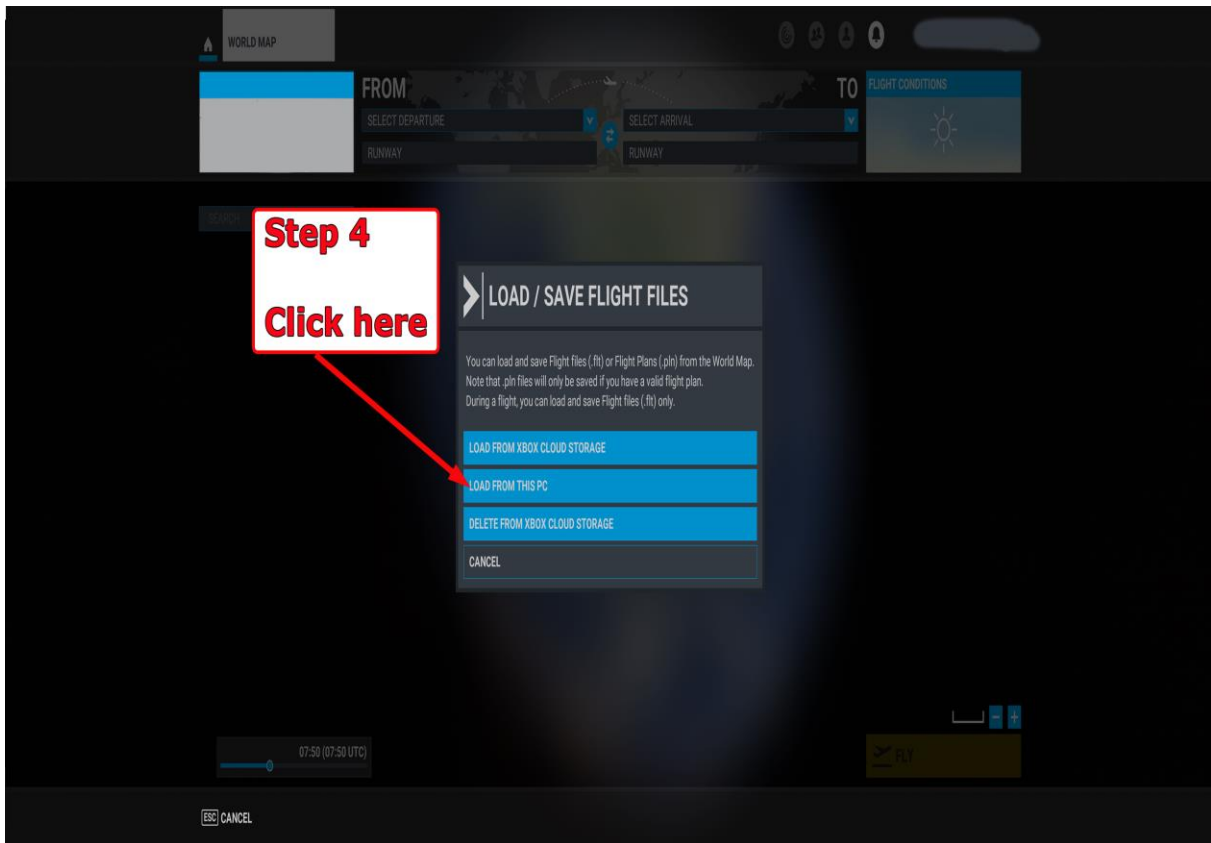


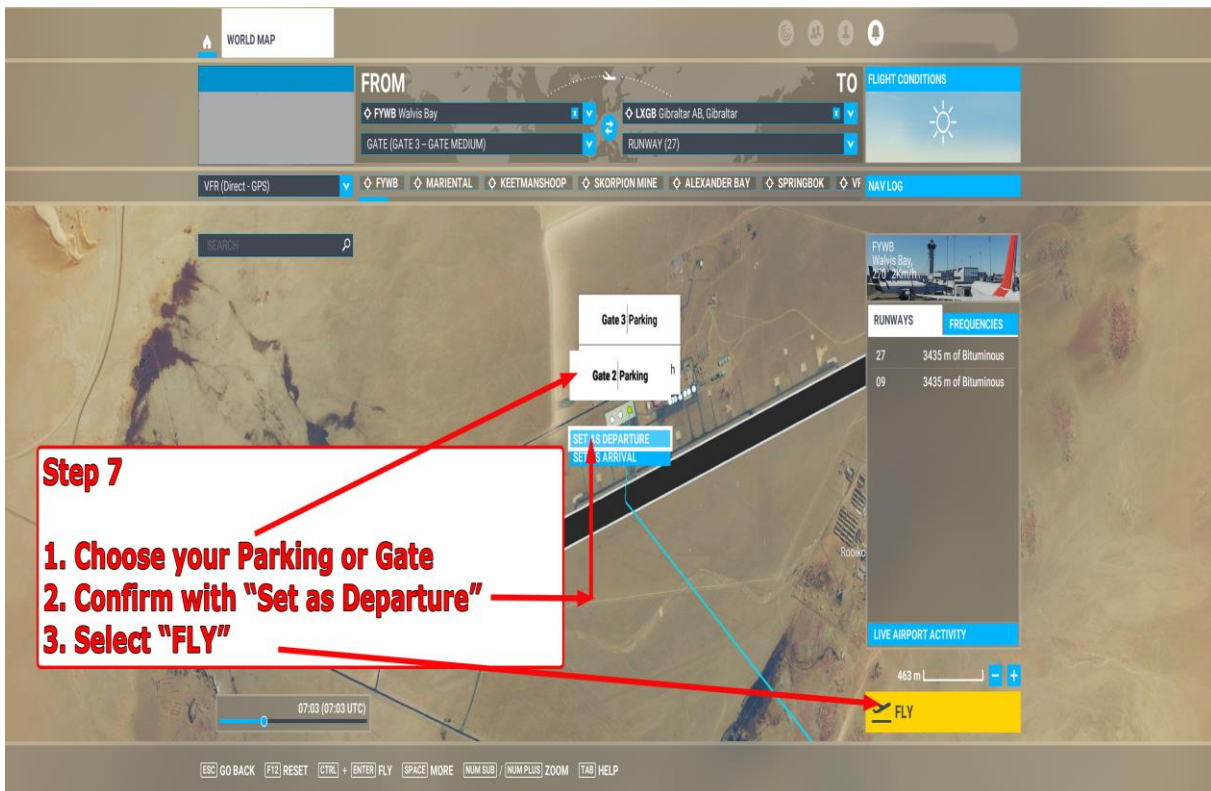
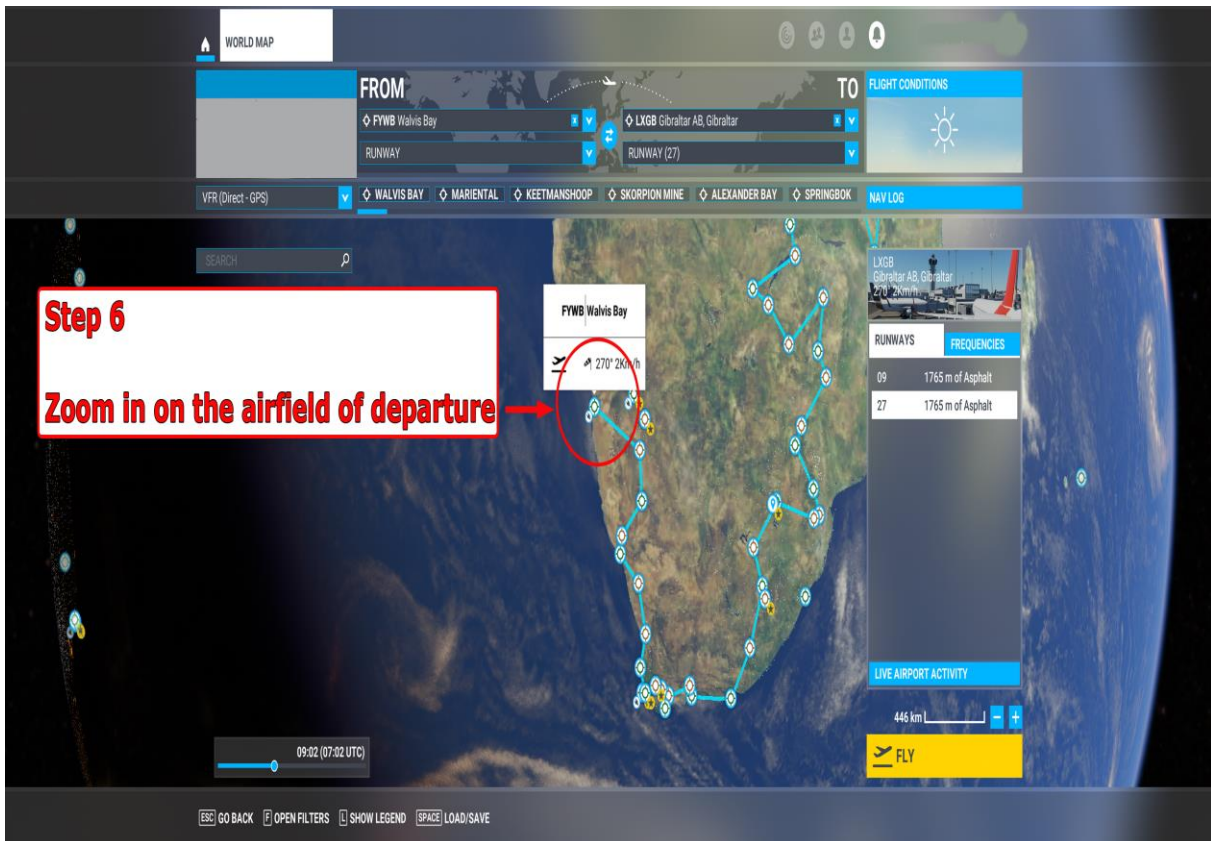
The screenshot shows the main menu of Microsoft Flight Simulator. At the top, there are tabs for 'WELCOME', 'PROFILE', and 'OPTIONS'. The 'WELCOME' tab is active. Below the tabs, there are several menu items:

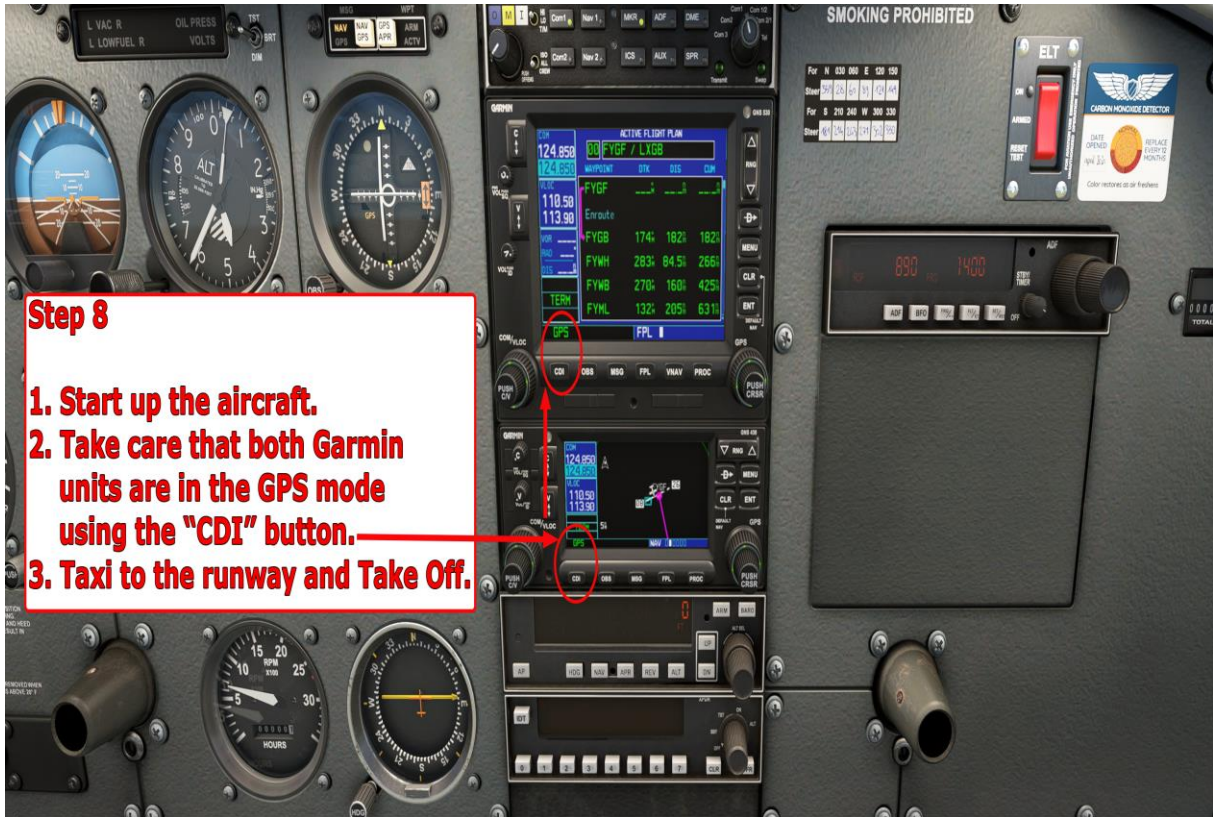
- DISCOVERY FLIGHTS**: enjoy an easy airborne flight around iconic and beautiful locations. This item has a 'NEW' tag.
- WORLD MAP**: Create a flight plan and explore the world in Free Flight mode. This item has a 'NEW' tag and is highlighted with a red box containing the text 'Step 1' and 'Click here' with a red arrow pointing to it.
- FLIGHT TRAINING**: Learn fundamental skills and techniques to fly like a professional.
- ACTIVITIES**: Test your skills with Landing Challenges, Bush Trips and more.
- MARKETPLACE**: ANTONOV AN-225 100% of gross receipts Microsoft receives from the sale of this plane for a year after PC launch will be given to ANTONOV Company to either rebuild or memorialize the plane.
- PILOT PROFILE**: A sidebar on the right shows a pilot profile for 'PoorlyMaple' with '173HR' and a 'NEXT LEVEL' indicator.

At the bottom of the screen, there are two utility buttons: 'ESC QUIT TO DESKTOP' and 'TAB READ SUPPORT AND RELEASE NOTES'.



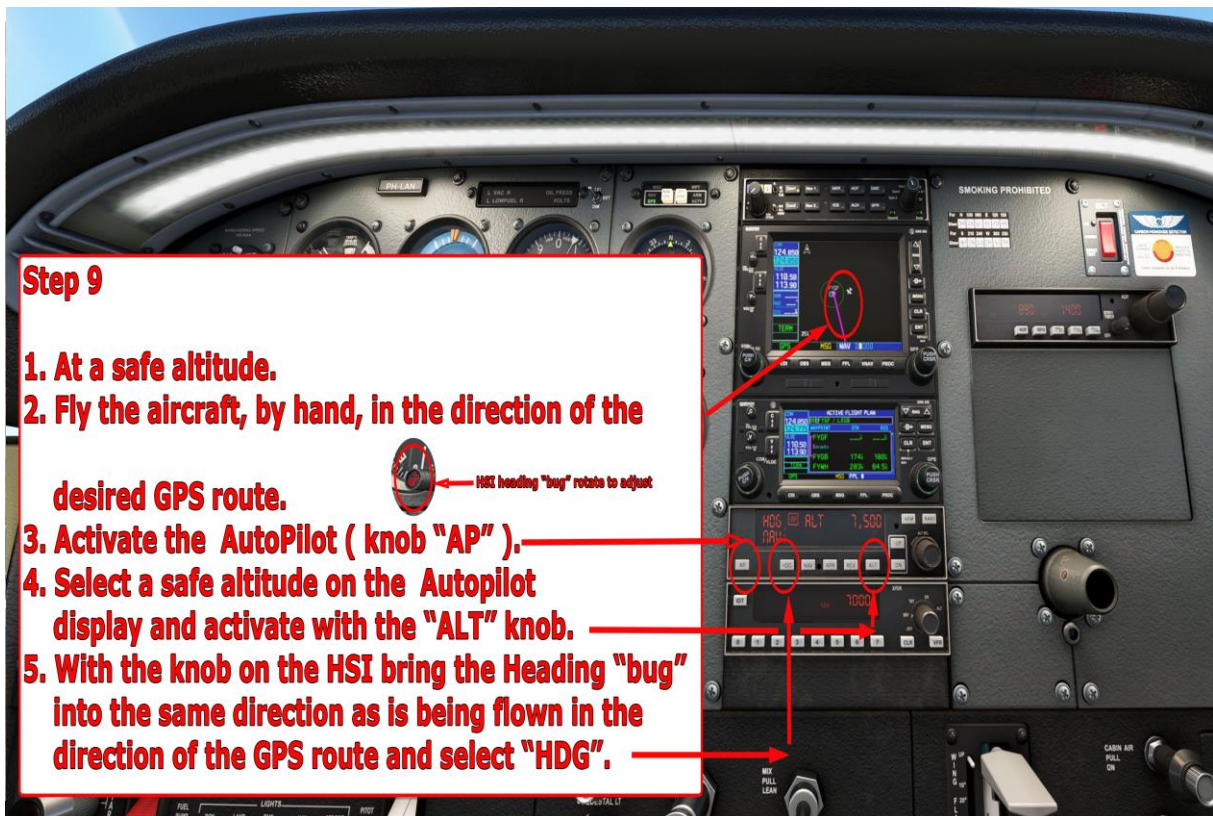






Step 8

1. Start up the aircraft.
2. Take care that both Garmin units are in the GPS mode using the "CDI" button.
3. Taxi to the runway and Take Off.



Step 9

1. At a safe altitude.
2. Fly the aircraft, by hand, in the direction of the desired GPS route.
3. Activate the AutoPilot (knob "AP").
4. Select a safe altitude on the Autopilot display and activate with the "ALT" knob.
5. With the knob on the HSI bring the Heading "bug" into the same direction as is being flown in the direction of the GPS route and select "HDG".


 HSI heading "bug" rotates to adjust

